

046853  
RECEIVED  
LARAMIE COUNTY  
CHEYENNE, WY.

CERTIFIED LAND CORNER RECORDATION '88 JUL 20 AM 11 30

DESCRIPTION OF CORNER EVIDENCE FOUND, AND ORIGINAL RECORD (If known)  
Found 3" x 6" red sandstone project 0.2' above ground with 3 notches on South edge and 3 notches on East face.

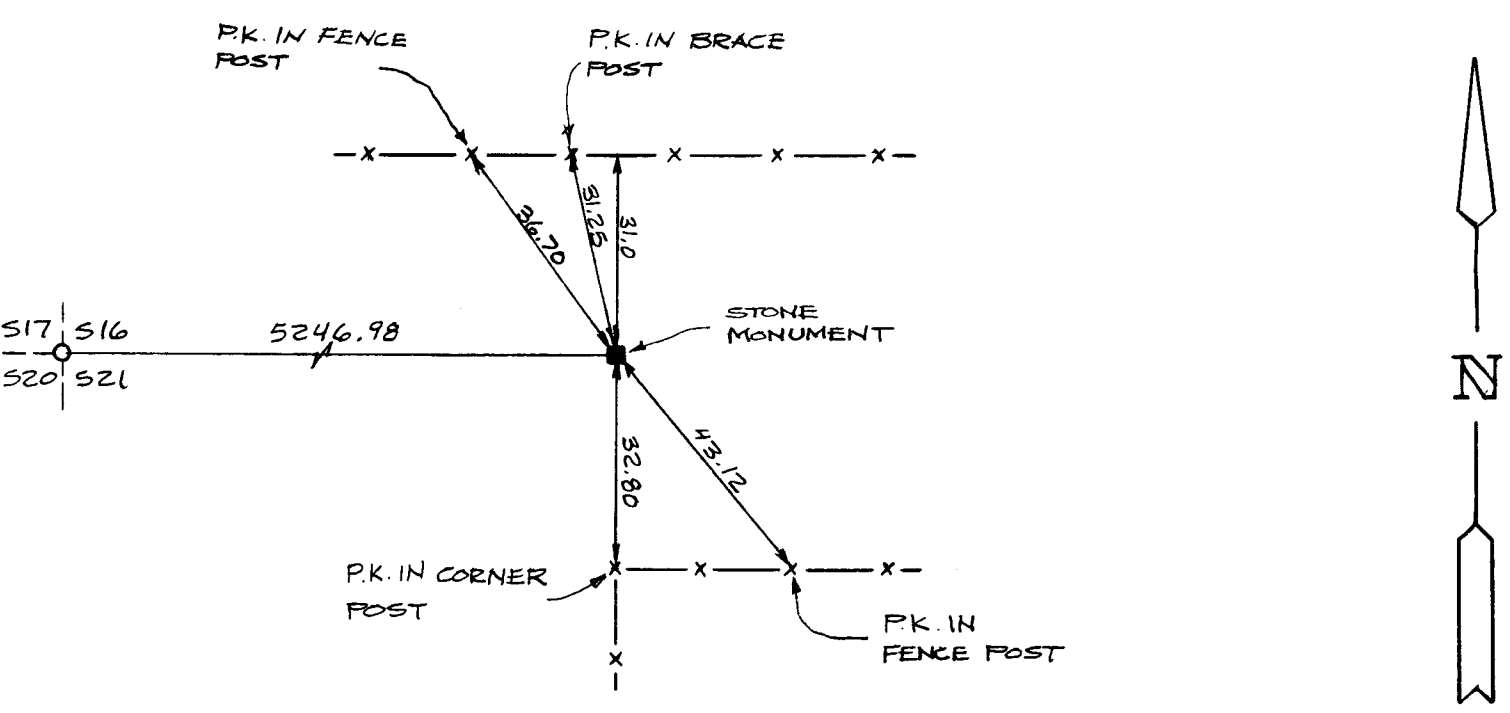
S.16 S.15  
S.21 S.22  
T.14N., R.64W.  
6th P.M.

G.L.O. Record: Red sandstone 18" x 11" x 6".

DESCRIPTION OF MONUMENT AND ACCESSORIES ESTABLISHED TO PERPETUATE THE ORIGINAL LOCATION OF THIS CORNER:

At the corner: Not remonumented.  
Accessories : See ties below.

SKETCH, WITH COURSE AND DISTANCE TO ADJACENT CORNER IF DETERMINED IN THIS SURVEY.  
(May Sketch or Paste Reproduction on Reverse Side.)



I, John A. Steil certify that I have carefully performed or reviewed the work done on the diagrammed corner as reported on this recordation form and approve the same.

*John A. Steil*  
Signature of Surveyor

L.S. 2500  
Registration No.

STATE OF WYOMING,  
Office of Clerk and Recorder,  
County of Laramie

This "corner record" was filed for record on the 21<sup>st</sup> day of July, 1988, was noted on the cross-index plat and is assigned page No. \_\_\_\_\_, in book No. \_\_\_\_\_.

*James C. Witherspoon*  
County Official

Cross Index No.	<u>N-13</u>	T. <u>14N</u>	R. <u>64W</u>	Mer. <u>6th</u>
_____	_____	T. _____	R. _____	Mer. _____
_____	_____	T. _____	R. _____	Mer. _____
_____	_____	T. _____	R. _____	Mer. _____
_____	_____	T. _____	R. _____	Mer. _____
_____	_____	T. _____	R. _____	Mer. _____
_____	_____	T. _____	R. _____	Mer. _____